

How can I do more for my patients
and my practice?



Advanced Imaging. Automated Workflow.
ErgoDynamic Design.

ACUSON X300 Ultrasound System, Premium Edition —
Women's Imaging

Answers for life.

SIEMENS



Streamlined, Automated Workflow. Now that's Smart.

Siemens is dedicated to streamlining workflow and clinical efficiency so that you can skillfully manage your practice and efficiently serve your patients. From a customizable patient entry screen to a 12-second system power-up for fast access when time is of the essence, the ACUSON X300™ ultrasound system, premium edition (PE) — *Women's Imaging* is engineered to help you work productively across a range of clinical scenarios.

Featuring the innovative syngo® Auto OB measurements technology, the system is programmed to recognize anatomic landmarks for standard biometric measurements and automatically perform measurements at the touch of a button. This breakthrough technology provides up to a 75% reduction in keystrokes, reducing exam time and substantially improving consistency of serial measurements.

For fast access to patient information in office or hospital settings, the ACUSON X300 PE — *Women's Imaging* system includes the DIMAQ-IP integrated ultrasound workstation and a comprehensive suite of DICOM capabilities. Images can be easily transferred to CD, DVD or USB device for sharing with the patient or for long term storage.

A comprehensive reporting package offers customizable letterhead, inclusion of pertinent clinical images, configurable comments, recommendations and a customizable signature line.

Utilize the offline syngo® fourSight™ ViewTool technology for analysis, remote review, manipulation and storage of 3D/4D volume analysis of the system, freeing your system for additional patient exams.





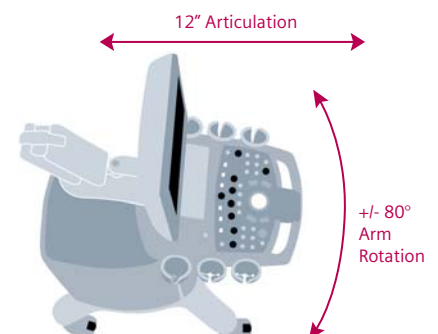
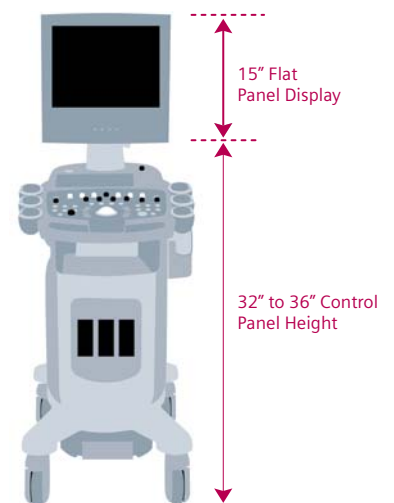
ACUSON X300 PE — *Women's Imaging* offers a comprehensive range of ergonomic transducers to deliver the image quality needed for a confident diagnosis. Penetration as deep as 30 cm is achieved without excessive transducer pressure through advanced technologies such as Hanafy Lens and MultiHertz imaging.

Works with You, Works for You.

The ACUSON X300 PE — *Women's Imaging* system supports Siemens' ErgoDynamic design for operator comfort. The lightweight, compact system is easy to move from room to room for maximum flexibility in any environment.

Practical ergonomic features including an adjustable control panel and articulating flat panel display provide optimal positioning in tight spaces. Small, lightweight transducers complete the ergonomic package with advanced features such as Hanafy Lens and MultiHertz™ multiple frequency imaging technologies, which provide excellent penetration with reduced scanning pressure.

- The operator friendly console is centered on a Home Base design to reduce hand and arm movement, while the adjustable control panel and articulating arm provide comfort and configurability in a variety of scanning environments.





Service at Your Fingertips.

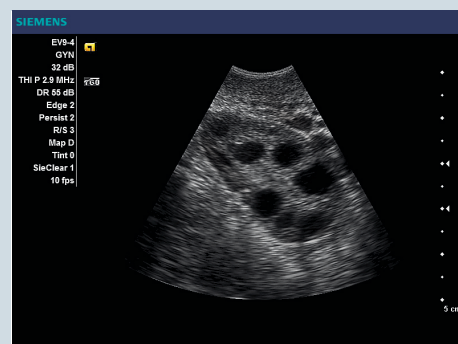
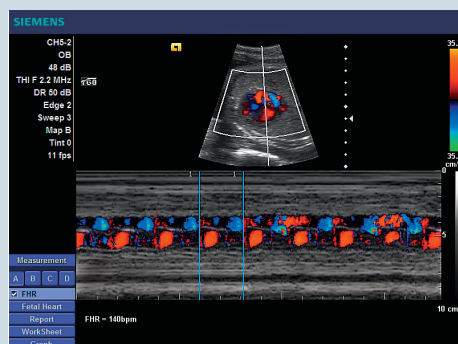
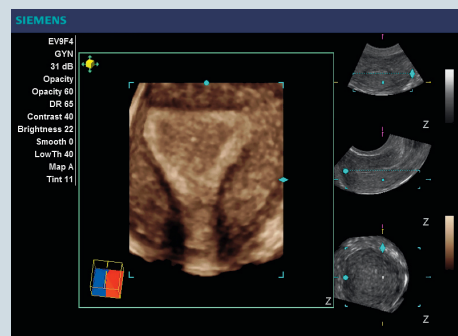
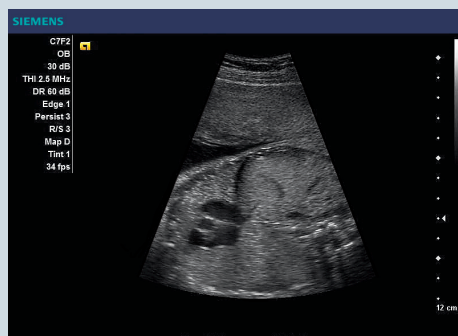
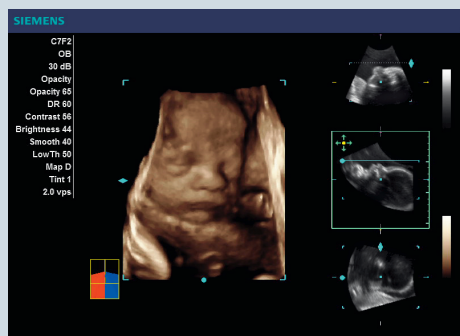
Life is the unique customer care solution from Siemens that helps you get the most from your investment. From the moment of your purchase, Life surrounds you with an array of programs and support that enables the continuous development of your skills, productivity, and technology. Allowing you to broaden your capabilities. Increase profitability. And take patient care to the next level.

In addition to standard service, the ACUSON X300 PE — *Women's Imaging* system is also backed by Siemens Remote Service, providing an even easier, more streamlined and cost-efficient way to address your service requirements.

The ACUSON X300 PE — *Women's Imaging* system is designed from the ground up to give you more: more accuracy, more productivity, more comfort for improved OB/GYN outcomes — every patient, every time.

Grows with You and Your Practice.

As part of the ACUSON family, the ACUSON X300 PE — *Women's Imaging* system's all digital, open architecture is designed with the future in mind. The latest imaging technologies can be added as upgrades to the system after installation, including hardware, software, transducers and peripheral devices, thus allowing the system to grow as the clinical needs of your practice expand. Options and upgrades protect your original investment and keep you competitive in your market place.



- ▶ Advanced *fourSight™* 4D imaging technology delivers exceptional detail in 3D/4D rendering as demonstrated in this 28 week fetal face.
- ▶ *SieScape™* panoramic imaging provides a global orientation of anatomy and pathology as demonstrated in this simple breast cyst.
- ▶ Tissue harmonic imaging is used to reduce image noise and enhance contrast resolution in this fetal abdomen and thorax.
- ▶ The excellent sensitivity of Color Doppler imaging is demonstrated with M-mode in the evaluation of the fetal heart.
- ▶ Detailed examination of the endometrium is achieved with Advanced *fourSight* technology, providing easy access to the anatomical coronal plane of the uterus.
- ▶ *SieClear™* multi-view spatial compounding delivers exceptional contrast resolution as demonstrated in this image of ovarian follicles.

Excellent Image Quality. Every Patient, Every Time.

The ACUSON X300 PE — *Women's Imaging system* is a compact, all-digital ultrasound system delivering exceptional clinical performance, automated workflow innovations and an easy-to-use ErgoDynamic™ imaging system design. The robust platform supports a full complement of imaging options dedicated to obstetrics and gynecology, with an upgradeable architecture designed to grow with your practice as needs evolve.

The system features a suite of advanced technologies to enable improved image uniformity, even with difficult-to-image patients. Key technologies include:

- Hanafy Lens technology for superb image uniformity throughout the field of view providing up to 30 cm in depth without excessive transducer pressure.
- Dynamic TCE™ tissue contrast enhancement technology utilizes speckle reduction technology for improved contrast resolution and border enhancement. This provides easy visualization of anatomy such as fetal lung, liver, bowel interface or endometrium.
- TGO™ tissue grayscale optimization technology provides one button optimization of B-mode images to shorten exam time, reduce repetitive motion and provide greater consistency between users.
- *fourSight™* 4D imaging technology provides a complete 3D/4D solution for obstetrics and gynecology. The technology delivers streamlined, intuitive workflow and advanced acquisition, data rendering and post-processing functionality for trans-abdominal and endovaginal exams.
- *syngo®* Velocity Vector Imaging™ technology for fetal echocardiography uses a sophisticated 2D tracking algorithm to provide further insight into fetal myocardial mechanics.

Standalone clinical images may have been cropped to better visualize pathology.

ACUSON, Dynamic TCE, ErgoDynamic, *fourSight*, MultiHertz, SieClear, SieScape, TGO, Velocity Vector Imaging and X300 are trademarks of Siemens Medical Solutions USA, Inc. and *syngo* is a trademark of Siemens AG.

129626, Москва, проспект Мира,
дом 102, корпус 1, этаж 6, к. 6

Телефон: 8 (800) 555-73-87

Email: info@medeq.ru

Web: www.medeq.ru