

## DC-45

Diagnostic Ultrasound System

# Scanning with Exceptional Capability

*FullHD*



129626, Москва, проспект Мира,  
дом 102, корпус 1, этаж 6, к. 6

Телефон: 8 (800) 555-73-87


Email: [info@medeq.ru](mailto:info@medeq.ru)

Web: [www.medeq.ru](http://www.medeq.ru)

## Introduction of DC-45:

To deliver on the promise of quality health care within reach, Mindray keeps on introducing the progressive solution to you, who devote to contribute more for Primary Healthcare Service. As the most important friend of you, Ultrasound system deserve exceptional capability to improve your contribution.

With the comprehensive understanding of your improving mind, the brand-new DC-45 is aimed to provide you with:

 Higher Imaging Definition

 Higher Ergonomic Design

 Higher Reliable Dependence



## Higher Imaging Definition

'Keep on innovating' is the motivation of Mindray, and powered by the Full HD display, classic imaging technologies, and optimized transducer family, DC-45 provides you outstanding imaging clarity for wider range of clinical diagnosis.

### Classic imaging technologies: enhancing the quality for diagnosis

By the application of classic imaging technologies, which are migrated from established ultrasound systems, DC-45 provides you with the enhancement on the quality of image detail.

- iClear (speckle-reduction imaging technology)
- PSH (Phase Shift Harmonic imaging)
- iBeam: spatial-compounding imaging technology

### Optimized transducers family: wide range of application coverage

With versatile transducers combination, DC-45 offers the best balanced performance across a wide range of applications, and produces advanced image quality in a wide variety of patient types.

### ComboWave

ComboWave is a unique transducer technology for Linear. By the applying of a new type of composite piezoelectric material, DC-45 obtains better acoustic spectrum and lower acoustic impedance, and produces better performance of linear transducers.

### Dual-Volume

Combining the convex volume, endocavity volume, and related application packages, DC-45 introduces the "Dual-Volume" solution, which provides dedicated 4D women care from the prenatal exams to the pregnancy check.



Dual-Volume

### Urological solution

The specially-designed biplane transducers, including the linear/convex and dual micro-convex, support versatile urological solution for your mind-extension.



Urological solution

### One-Key exam mode switch

The recent exam modes are listed on the right side of touchscreen. You can change the frequently-used mode by a single keystroke to simplify the workflow for efficiency.



One-Key exam mode switch

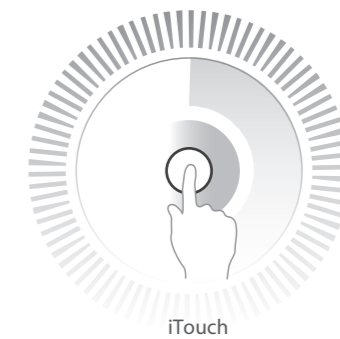
# Higher Ergonomics Design

## Full range of application tools: accuracy guarantee with convenience

DC-45 delivers a range of tools that maximize diagnostic accuracy with convenience. Covering General Imaging, OB/GYN and Cardiology, DC-45 provides you with a complete solution for mainstream clinical applications, with simplified workflow for efficiency.

### iTouch

iTouch is a one-button auto image optimization solution, which is able to optimize the imaging quality automatically, including in B/PW mode.



### Smart OB

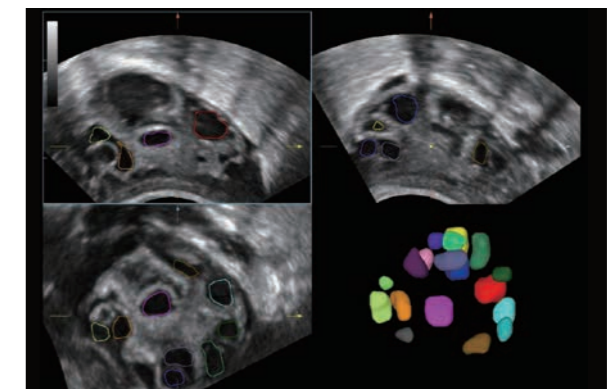
Smart OB provides accurate auto measurements for most frequently examined fetal parameters including BPD, OFD, HC, AC and FL.



Smart OB

### Smart FLC

Smart FLC is a tool to automatically detect the number of follicles, and calculate the of each follicle. It also provides a report with color marks for study.



Smart FLC

### Smart Face

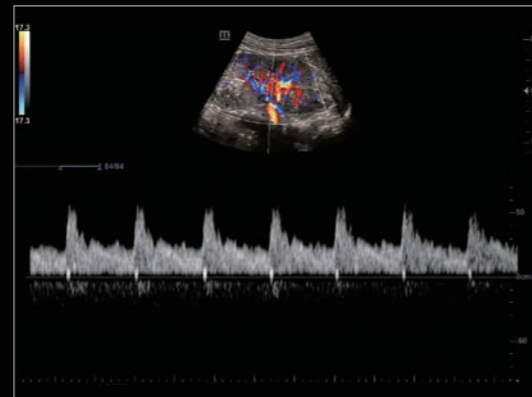
Smart Face provides fast and intelligent optimization for fetal face with one-touch operation. It immediately removes occlusions and eliminates noise information, generating an optimal view of the fetal face with more simplicity.

### iLive

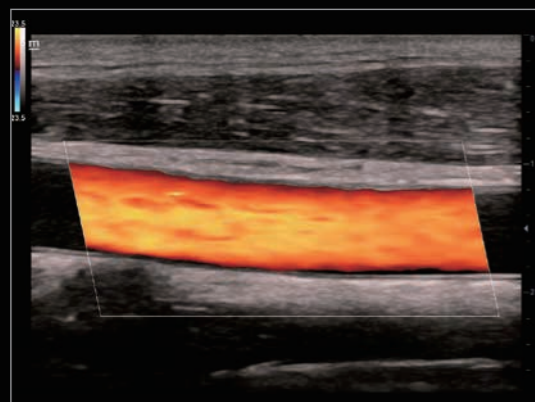
Integrating a ray-casting algorithm with a new virtual lighting modality, iLive generates an amazingly realistic view of the fetus with human skin-like images.



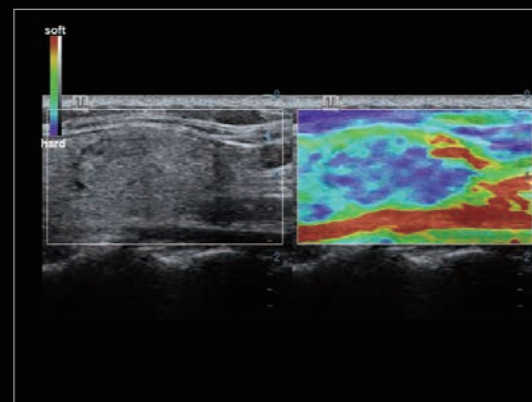
Normal Kidney, 2D



Kidney artery triplex



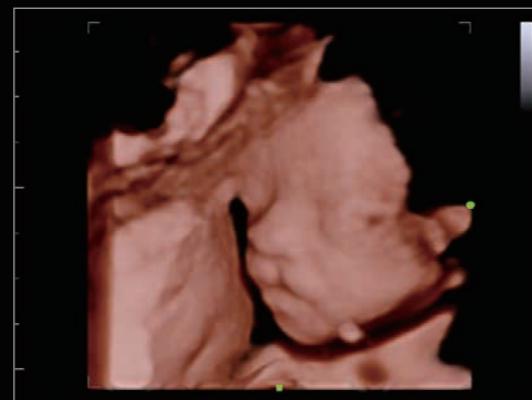
Carotid color



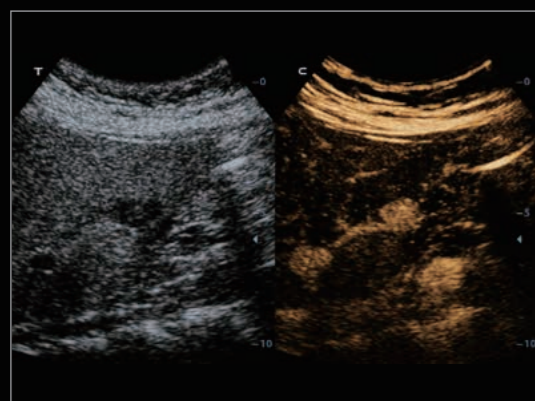
Natural touch elastography of thyroid mass



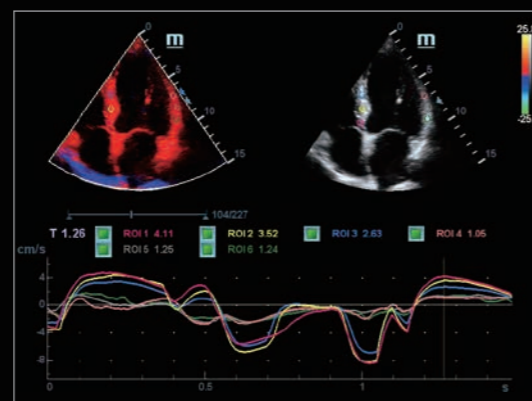
Fetal heart CFM



Fetal face iLive



UWN contrast imaging, liver tumor



TDI QA



## Ergonomic for ease-of-use



Rotatable and height adjustable control panel with integrated design



21.5" full HD LED Monitor, 180 degree rotation



13.3" slim full HD LED touchscreen, 30 degree rotation

Gel warmer



Dedicated endocavity transducer holder

4 active transducer sockets



Retractable QWERTY keyboard



Storage plate

## Higher Reliable Dependence

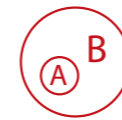
For decades, Mindray cares about using intelligence to enhance the safety, accuracy and stability of its products, to ensure the satisfaction during your daily diagnosis.

### Guarantee of safety and stability:



#### EMC (Electro Magnetic Compatibility)

By obtaining the CB Test Certificate (the certificate for EMC approval, Ref. Certif. No. FI-31332), DC-45 reaches the highest anti-interference level assurance, which ensures the stability of its imaging quality.



#### Class B (Power supply requirement)

The power supply level required by DC-45 is Class B. It can work under not only hospital power supply condition (Class A), but city power supply condition (Class B), and it offers you more safety and compatibility when you operate DC-45 in any complicated environment.



#### iPower (built-in battery)

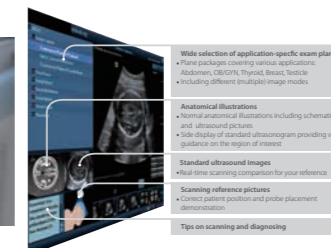
Configured with a built-in battery, which has obtained the CB Test Certificate (the certification for battery reliability approval, Ref. Certif. No.SG PSB-BT-00022), DC-45 supports scanning for more than 80 minutes without external power supply, which enhances the continuity of your daily work even when the power supply is poor, and ensures the mobility.



Integrated control panel, anti-dust design



Transducer cable management, designed for regular and protection



iScanHelper (built-in tutorial)



IOS/Android app



MedSight

For value-range ultrasound diagnostic systems, it is more important to ensure high capability, reliability and ease-of-use through intelligent planning and customer-oriented consideration, instead of simply focusing on improving operation efficiency. This is the Mindray's unique attitude towards the development of value-range ultrasound systems.